



## 2014 Annual Report

*Providing the Community with Compassionate  
and Caring Outreach Programs*





## Table of Contents

Board of Directors and Executive Staff	2
President's Message	3
History of Greene County Memorial Hospital Foundation	4
Programs Receiving Grants	5 - 13
Special Events	14 - 15
Major Donors	16
Financial Report	17



# Board of Directors



Jay Hammers, President  
Owner  
Rhodes and Hammers Printing



Sheila Elliott Stewart, VP  
Vice President  
First National Bank of PA



Kirk King, Secretary, Treasurer  
Attorney  
King Law Office



Don Headlee, Emeritus  
Executive Vice President  
AG Financial Solutions



Matt Blair  
Technology Coordinator  
Central Greene School District



Daniel Church, MD  
Pediatrician  
Central Greene Pediatrics



John Dorean  
Pastor  
Jefferson Baptist Church



John Kendralla  
Supervisor (Retired)  
Penn DOT

## Greene County Memorial Hospital Foundation

## Executive Staff



David Jones  
Executive Director



## Letter from the President

*Jay S. Hammers*

It's hard to believe it's been more than nine years since the formation of our foundation. In that time, we have touched more than fifty nonprofit organizations in Greene County. Central Greene School District, Children's Bible Ministries, Catholic Charities, Greene County

Career and Technology Center, H.E.A.D.S.U.P., Greene County Parks and Recreation and the Corner Cupboard Foodbank are just a few we provided funding to for ongoing and new programs in the past year.

We have also contributed greatly to many individuals throughout the county in the form of scholarships and tuition assistance awards. Fourteen nursing students, a medical student and 34 high school students have received more than \$250,000 collectively in the past nine

years, many of whom have returned to Greene County to help improve the healthcare of our community. The tuition assistance awards are made on behalf and with generous donations from the Auxiliary of Southwest Regional Medical Center.

We are also incredibly focused on building a large recreation facility for the county. Current plans include a large indoor soccer field, basketball court, community rooms, a full service fitness facility, an indoor walking track and much more. We sincerely hope this facility will provide the community with programs and services that aren't currently available in Greene County and will play a pivotal role in increasing recreational opportunities for everyone.

On the pages that follow are just a few of the programs we were able to provide funding for in the past twelve months. On behalf of my fellow board members, we thank all of you for your support over the past many years and we look forward to furthering our mission of providing programs designed to benefit the health and well-being of all Greene County residents.



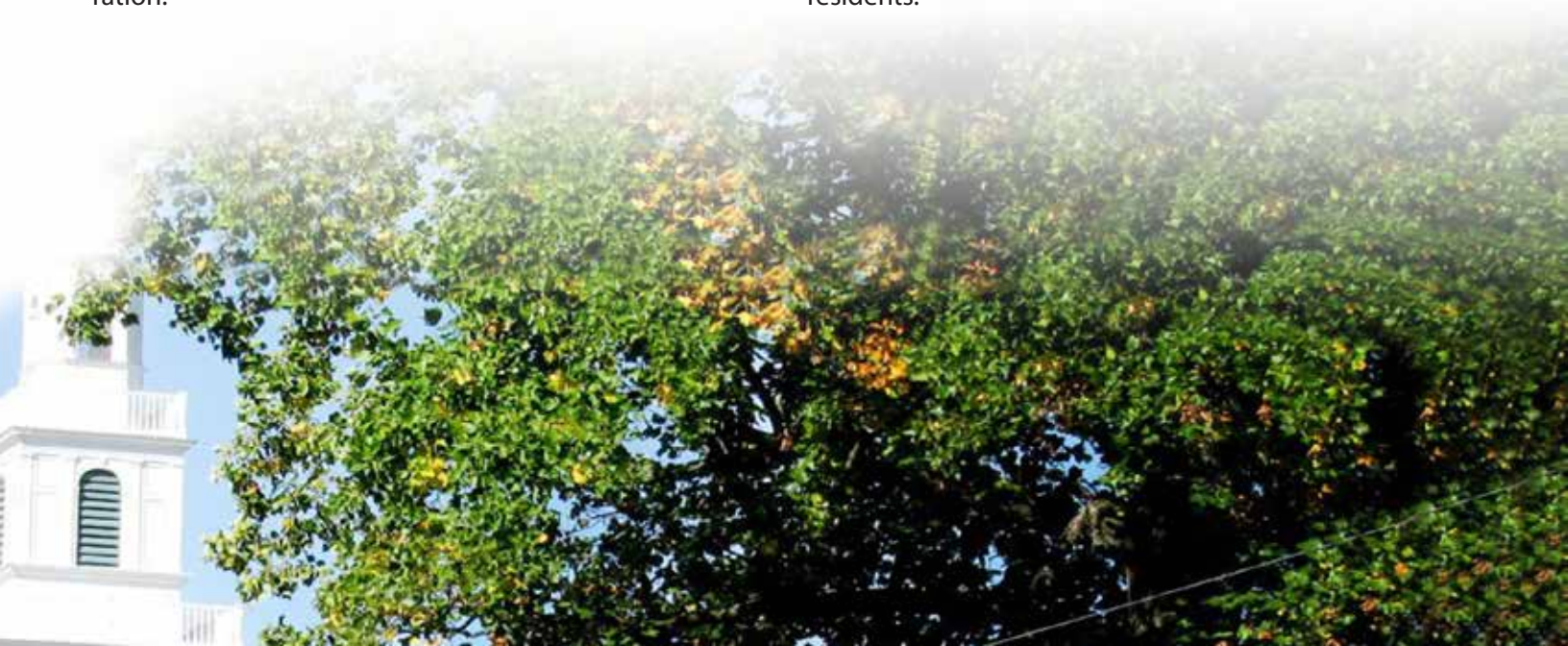
## History of Greene County Memorial Hospital Foundation

Greene County Memorial Hospital Foundation (GCMHF) was formed as the result of the sale of Greene County Memorial Hospital in October, 2005, to Essent Healthcare in Nashville TN. The hospital traces its roots to the years 1904 and 1905 when two Waynesburg physicians, Dr. Harry C. Scott and Dr. Frank Ullom, opened the first hospital in Greene County.

By 1907 the hospital earned accreditation by the Joint Commission on Accreditation of Hospitals and the Department of Public Welfare in recognition of its programs and professionalism. Twenty years later Waynesburg Hospital officially changed its name to Greene County Memorial Hospital and began operating as a non-profit corporation.

The hospital continued to grow in response to the needs of the community and with the support of the Auxiliary, built a completely modern three-story facility. The 88-bed hospital officially opened in February, 1938. Over the decades that followed, the hospital built many additions to the original structure, concluding with a five-story addition which was completed in 1976.

Today the original hospital, now known as Southwest Regional Medical Center, stands as a shining beacon to rural healthcare, and GCMHF is doing its part to advance healthcare initiatives throughout the county. With the help of many supporters, funding has been provided to dozens of organizations for the express purpose of advancing the health and well being of all Greene County residents.





## The Auxiliary of Southwest Regional Medical Center Continues Their History of Donations to GCMHF

Year after year the Auxiliary of Southwest Regional Medical Center makes significant contributions to the foundation's tuition assistance programs. Twice over the past twelve months they donated \$10,000 to be used to provide tuition assistance awards to Greene County students who are pursuing medical degrees and plan on returning to Greene County upon graduation.

The Auxiliary, which provides services in three separate areas (escort services and the gift shop at Southwest Regional Medical Center, as well as the Cherry Door on Elm Street in Waynesburg), seeks to have an immediate and powerful impact on the healthcare services available to Greene County residents.

Each year, GCMHF grants these awards based on a variety of criteria in hopes of attracting the best and the brightest of Greene County to practice their medical training in an area where they grew up. The tuition awards are available for nursing students, and nurses who are seeking the additional certification as a Registered Nurse Practitioner. In most cases, a nurse who possesses a master's degree can obtain a CRNP license in twelve to twenty-four months' time.

Over the past seven years, the Auxiliary of Southwest Regional Medical Center has contributed more than \$200,000 to the foundation, which in turn awards it directly to Greene County students. The awards are distributed through the Greene County Memorial Hospital Foundation and are available on an annual basis. Each spring the foundation accepts applications for these awards. The



*David Jones, Executive Director, GCMHF and Mary Zollars, President, SMRC Aux.*

application and additional information can be obtained by calling the foundation office directly, or by visiting the website at [www.GCMHFoundation.org](http://www.GCMHFoundation.org).

(cont.)

Below is a list of the recipients who have received awards this past year and are anxious to apply their skill and education to improve the health and well-being of Greene County residents once they complete their training:



**Julie Beiter**, Registered Nurse, currently seeking CRNP License at Robert Morris University, and has received \$8,500



**Christian Berardi**, Nursing Student, currently enrolled in Waynesburg University's Nursing Program and has received \$15,000



**Brad Mackey**, Registered Nurse, currently seeking CRNP License at West Virginia University and has received \$7,000



**Rebecca Lash**, Nursing Student, currently enrolled in Westmoreland County Community College's School of Nursing and has received \$5,000

## GCMH Foundation awards \$10,000 to Five Local Seniors

GCMHF has once again awarded \$2,000 scholarships to local graduating seniors who have been accepted to college and intend to major in a healthcare related field. Listed below are this year's winners:



Kaylee Boosel  
Carmichaels HS  
Physical Therapy  
Slippery Rock Univ.



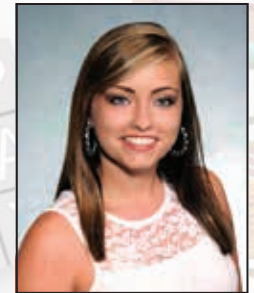
Jonathan Coote  
W. Greene SD  
Biology/Pre-Med  
Hillsdale College



Jenna Hellen  
Jefferson Morgan HS  
Nursing  
Waynesburg Univ.



Kyle McIntire  
Mapletown HS  
Physical Therapy  
Slippery Rock Univ.



Courtney Patterson  
Waynesburg Central HS  
Pharmacology  
Duquesne Univ.



## Foundation for Wellness Celebrates Five Year Anniversary and Continues to Provide Services Beyond Its Walls

Five years ago, GCMHF agreed to renovate and oversee the operation of the wellness center located on the first floor of Southwest Regional Medical Center. Since that time, it has seen its membership more than double, and had nearly 170,000 visits!

Anxious to extend its effect, the Foundation for Wellness, through a grant from the Auxiliary of Southwest Regional Medical Center, instituted a community based program of educational seminars a little more than a year ago. These seminars are free to any group that desires a program and can be tailored to meet a variety of goals and are conducted by Robert Schiffbauer.

Bob is a registered nurse, currently working in the operating room at Southwest Regional Medical Center (SRMC). He has been employed at SRMC, formerly Greene Co. Memorial Hospital for 22 years. During this time, he

has served as the Clinical Manager of the Cardiology Department, Clinical Manager of the Intensive Care Unit, and as the Director of Emergency and Prehospital services. He has also worked as a Flight Nurse for Stat MedEvac, and has lectured for Genentech Biogenetical Engineering specializing in Cardiac Care Therapies.

He teaches Basic Life Support, First Aid, Advanced Cardiac Life Support, and Pediatric Advanced Life Support classes for the American Heart Association. He has also been a volunteer firefighter for the past 37 years, currently serving with the Carmichaels & Cumberland Twp. Volunteer Fire Company. Bob resides in Carmichaels with his wife Susan, and is the father of Rob & Staci Schiffbauer, and the "Pappy" of Brody Schiffbauer. For more information on how he can conduct a seminar for your organization, he can be contacted at [robert.schiffbauer@sw-rmc.com](mailto:robert.schiffbauer@sw-rmc.com).



## Camp Challenge closes with “Fun Day” at Greene County Fairgrounds

For the eighth consecutive year, GCMHF provided funding for Camp Challenge, which is administered through Greene County Parks and Recreation. The camp is offered to all youth, age five to eleven at Jefferson, Mon-View Park, Lions Club Park, Ryerson Park and Wana B Park in Carmichaels. A total of 536 children participated in the camp this past summer.

During the four-week camp, the lesson topics were social skills, hygiene and etiquette, nutrition, fitness and

creative expression. Every student received a pedometer, caring bracelet, dental kit and t-shirt. The activities were interactive and included a scavenger hunt, jeopardy game, egg brushing activity and art lessons.

On July 22, more than 100 of the campers took a field trip to the Pittsburgh Zoo and concluded their day at the Olive Garden for lunch. It was the largest number ever to make the trip into Pittsburgh.



## GCMHF Provides Funding for Multiple Summer Camps and Additional Programming

The Borough of Waynesburg and the Greater Waynesburg Christian Outreach each administer summer camps for children and were awarded grants in order to continue their work this past year. Waynesburg's Summer Playground Program runs for six weeks and is held at Central Park. Nearly 800 children between the ages of 5-14 attended the camp, which runs Monday through Friday, 9:00 am to 2:00 pm.

The program promotes exercise, health and nutrition and hygiene issues. Its mission is to educate the youth of Greene County about positive lifestyles and career choices. Lessons are taught in a fun and interactive environment and include games, daily rewards and prizes. Additional classes to promote creativity and imagination through hands-on experiences of creating their own art work were also presented.

Greater Waynesburg Christian Outreach also holds a summer day camp each year, expanding this year's from five weeks to six. Areas that were stressed were exercise and nutrition, recreational sports, art, music and weekly cultural experiences.

A partnership with Catholic Charities and their Rollercoasters Program is also incorporated in order to provide support on an emotional level to better enhance each child's ability to cope with many of today's issues connected with unstable or changing home environments. GCMHF is proud to be able to continue to support programs like these that can play such a pivotal role in a child's life (see page 13 for more information on this program).





## Greensboro-Monongahela Twp. VFD Receives Grant to Renovate Former Church



The Greensboro-Monogahela Twp. VFD recently purchased Mon View Park Church with the intention of creating a training center that could also be used as a meeting place for surrounding residents. In order

to be able to utilize the facility improvements were necessary and one of the first items to be addressed was handicap-accessible restrooms. Since they are wholly a volunteer organization surviving on a small community's fundraising efforts and donations, a capital improvement such as this represented a large obstacle. With the implementation of a relatively new policy by GCMHF that can now address capital improvements, the township was eligible to receive \$25,000 for the purpose of constructing two, ADA approved restrooms.



## GCMHF Purchases Supplies for 3,000 Children Through Cornerstone Care's Dental Program

Cornerstone Care is a non-profit network with practices serving communities throughout Southwestern Pennsylvania, as well as Northern West Virginia and Eastern Ohio. Its mission is to improve the health of its patients and all residents within the communities it serves. To assist in this endeavor, GCMHF donated \$3,500 to purchase

dental supplies for nearly 3,000 children in Greene County as part of Cornerstone Care's Smile for Life program. It is hoped this program will improve the oral health status of children to hopefully prevent the future occurrences of more costly diseases.





## Greene County Career and Technology Center Receives Grant to Aid Nursing Students

For the third consecutive year, GCMHF approved a grant to Greene County Career and Technology Center. Each year the foundation provides funding to the center in order to purchase mandatory equipment for each nursing student. The equipment comes in a duffel bag the student gets to keep upon graduation and contains much of what they need to master prior to taking their nursing board exams.

Wendy Bouchard, Coordinator of Practical Nursing Program, knows this gives her students an advantage by utilizing their own medical equipment, kits and supplies. "They learn, practice and demonstrate proficiency in nursing skills prior to clinical rotations at our various facilities. They then utilize those skills throughout their career."

The practical nursing program partners with various civic organizations to assist in promoting health and wellness within the community. A few examples are:

- ❖ Cornerstone Care's Smile for Life Program
- ❖ Community Action's Head Start
- ❖ Rainbow's End
- ❖ Blood pressure screenings at local sites
- ❖ American Cancer Society's Relay for Life

Along with completing all coursework, students must work more than 1,600 hours in order to graduate.



*GCMHF ED Dave Jones with Brandy Sponaugle.*

## GCMHF Approves Grant for Central Greene School District

For the third consecutive year, GCMHF provided funding for operational costs to Central Greene School District for their indoor pool. The \$28,000 grant was issued to help with the annual costs. Not only does the student body utilize the pool throughout the school day, but the public is welcome to use it Monday through Friday in the evening for a nominal fee. In addition, any active member in the Foundation



for Wellness can participate in the water aerobics that are held twice a week in the evening.



## Farmer's Markets Receive Grants

Waynesburg Prosperous and Beautiful received a seasonal grant in order to hire an onsite manager to oversee the Farmers Market, held each Wednesday throughout the summer on Church Street in Waynesburg. The Farmer's Market is entering its tenth year and emphasizes eating healthy and uses an educational program called Buy Local, Buy Greene.

Greensboro Borough also runs a Farmer's Market one day per week under the auspices of the Nathaniel

Greene Community Development Corporation. Both markets promote healthy living and a healthy lifestyle.



## Catholic Charities Continues Valuable Rollercoasters Program with Help from GCMH

Since 2008, Catholic Charities has presented Rollercoasters to more than 730 children ages 5-8. The Rollercoasters program is an interactive eight-session school-based curriculum for children who are experiencing the emotional turbulence of family changes such as divorce or death of a family member.



Executive Director, Susan Rauscher (pictured at left) was thrilled to receive support (\$30,000) for the third consecutive year for a program that has been shown to have tangible results. Parents of children who have completed the program report their child's self-esteem was considerably improved, as was their willingness to express their feelings.

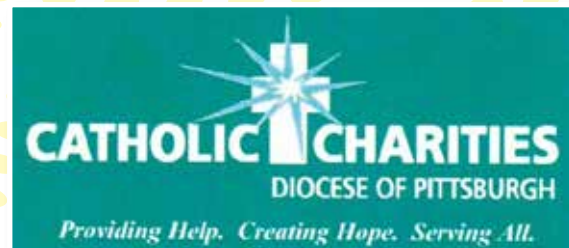
"It is critical that children learn the skills necessary to cope with the confusion that so often accompanies a change in family dynamics. By partnering with school districts to offer Rollercoasters during the school day, we are able to maximize attendance throughout the eight weeks," Rauscher explained.

The eight weekly sessions focus on the following themes:

- ❖ Understanding healthy ways to adjust to change in family dynamics
- ❖ Dealing with divorce and other life changes and realizing they are not the child's fault

- ❖ Grieving helps us move forward, making room for new experiences and growth
- ❖ Organizing feelings around events and experiences to improve self-esteem
- ❖ Discovering healthy coping skills to deal with anger and sadness
- ❖ Problem solving skills
- ❖ Preparing for new changes
- ❖ Synthesizing what has been learned

**To obtain any additional information on this very beneficial program, Catholic Charities' phone number is 724-627-6410 and is located at 72 E. High Street, Waynesburg.**





## Special Events

### Golf Outing

On July 18, 2014, GCMHF held its seventh annual Golf Benefit at Rohanna's in Waynesburg, PA. Fifty-six golfers came out for the day to support the foundation and have some fun. Taking home the first-place prize was the team from First Federal Savings and Loan Association of Greene County (below) with a score of fifteen under par.

As always, on hand to help out with the event were the 2014 Miss Rain Day Contestants. The golf outing is one of the two primary fundraising events the foundation holds each year and uses the proceeds to fund a variety of programs throughout the year.





## Special Events

### Harvest Ball

On November 8, 2014, GCMHF held the 25th annual Harvest Ball at Nemaconlin Woodlands Resort. Speaking on behalf of the Event Sponsor was Chuck Trump, Vice President of First Federal Savings and Loan Association of Greene County (pictured at left). GCMHF President, Jay Hammers, also spoke and thanked many individuals who have played a vital role in Harvest Balls over the years.



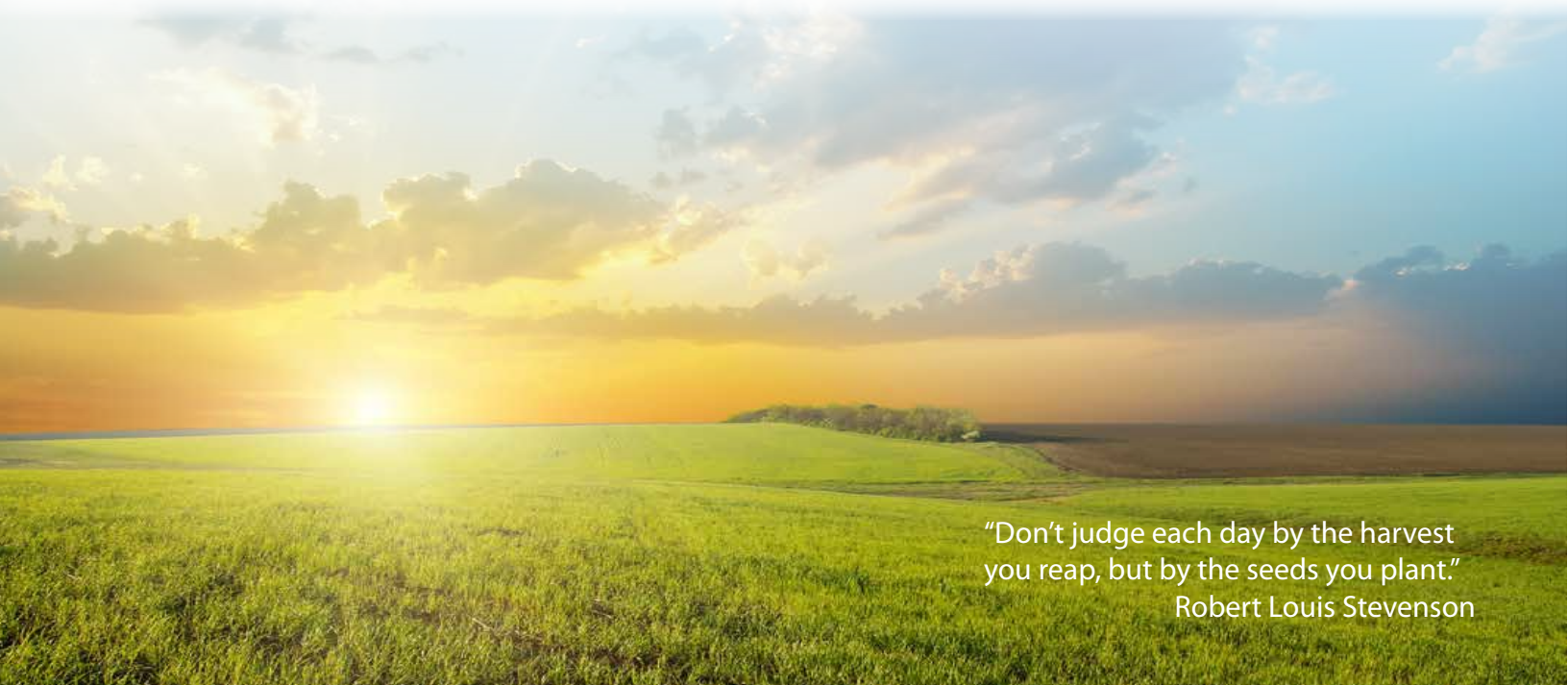
Rounding out the formalities was The Auxiliary of Southwest Regional Medical Center presenting the foundation with a \$10,000 donation for the nursing tuition assistance fund. Musical entertainment was provided by Protégé, with caricaturists and handwriting analysts, as well as JNB Photography on hand to add to the evening's festivities. Next year's ball will be held on Saturday, Nov. 7, 2015.



## Major Donors

Alpha Natural Resources  
Auxiliary of Southwest Reg. Med. Center  
Baily Insurance  
Community Bank  
Consol Energy  
EMS Southwest  
Energys  
First Federal of Greene County  
First National Bank of PA  
Don & Kalissa Headlee

H.E.A.D.S.U.P.  
K 2 Engineering  
Nemacolin Woodlands  
Observer Publishing  
Padgett Business Services  
Shaft Drillers  
Southwest Reg. Med. Center  
Washington Health System  
Waynesburg University



"Don't judge each day by the harvest  
you reap, but by the seeds you plant."  
Robert Louis Stevenson

## Financial Report, 2013

June 30, 2014 marked the end of the fiscal year for GCMHF. Certified accountants Frank P. Hess & Co. provided the financial statement. The complete Financial Report and Form 990 (required of non-profits), may be viewed at the GCMHF website ([www.GCMHFoundation.org](http://www.GCMHFoundation.org)).

### Balance sheet - June 30, 2014

<u>Assets</u>	<u>Unrestricted</u>	<u>Temp. Restricted</u>	<u>Total</u>
Cash and equivalents	\$ 673,079	\$ 36,823	\$ 709,902
Marketable Investments	\$ 12,930,749	\$ 0	\$ 12,930,749
Investment Income Receivable	\$ 22,260	\$ 0	\$ 22,260
Prepaid Expense	\$ 93,170	\$ 0	\$ 93,170
<b>TOTAL CURRENT ASSETS</b>	<b>\$ 13,719,258</b>	<b>\$ 36,823</b>	<b>\$ 13,756,081</b>
Property and Equipment	\$ 83,661	\$ 0	\$ 83,661
Construction in Progress	\$ 150,080	\$ 0	\$ 150,080
<b>TOTAL ASSETS</b>	<b>\$ 13,952,999</b>	<b>\$ 36,823</b>	<b>\$ 13,989,822</b>
<u>Liabilities and Net Assets</u>			
Liabilities - accounts payable	\$ 66,090	\$ 0	\$ 66,090
Net Assets	\$ 13,886,909	\$ 36,823	\$ 13,923,732
<b>TOTAL LIABILITIES AND NET ASSETS</b>	<b>\$ 13,952,999</b>	<b>\$ 36,823</b>	<b>\$ 13,989,822</b>
<b>Statement of Activities</b>			
<u>Support and Revenue</u>	<u>Unrestricted</u>	<u>Temp. Restricted</u>	<u>Total</u>
Investment Income	\$ 1,832,831	\$ 0	\$ 1,832,831
Program Revenue	\$ 159,289	\$ 0	\$ 159,289
Contributions, Bequests & Grants	\$ 9,438	\$ 10,000	\$ 19,438
Special Events (net of \$40,010 direct costs)	\$ 30,569	\$ 0	\$ 30,569
Net Assets Released from Restrictions	\$ 23,595	\$ (23,595)	\$ 0
<b>TOTAL SUPPORT AND REVENUE</b>	<b>\$ 2,055,722</b>	<b>\$ (13,595)</b>	<b>\$ 2,042,127</b>
<u>Expenses</u>			
Program	\$ 746,928	\$ 0	\$ 746,928
General & Administrative	\$ 62,508	\$ 0	\$ 62,508
Fund Raising	\$ 41,383	\$ 0	\$ 41,383
<b>TOTAL EXPENSES</b>	<b>\$ 850,819</b>	<b>\$ 0</b>	<b>\$ 850,819</b>
<u>Change in Net Assets</u>	\$ 1,204,903	\$ (13,595)	\$ 1,191,308
<u>Net Assets - Beginning of year</u>	\$ 12,682,006	\$ 50,418	\$ 12,732,424
<b>Net Assets - End of year</b>	<b>\$ 13,886,909</b>	<b>\$ 36,823</b>	<b>\$ 13,923,732</b>



7 East High Street, Waynesburg, PA 15370  
Phone: 724-852-2060 • Fax: 724-852-2063  
[www.GCMHFoundation.org](http://www.GCMHFoundation.org)